



xSERIES

EASY. RELIABLE. PRODUCTIVE.





xSERIES: BUILDING ON THE BEST

Our unwavering commitment to quality and dedication to constant improvement is evident today in our xSeries family. Built on the proven design and legendary reliability of our diesel powered rotary blasthole drills, xSeries machines incorporate added intelligence and improved ergonomics, offering operators the perfect combination of reliability and technology.

BETTER FOR OPERATORS. BETTER FOR BUSINESS.

The xSeries cabin features electrohydraulic controls, an enhanced operator's chair, touch screen and digital gauges, resulting in a more ergonomic design. These improvements provide a comfortable operating environment to enhance operator performance. The added intelligence of the touch screens and digital gauges gives the operator feedback on machine performance and monitors machine health.



xSeries



MAST

The xSeries proven mast and feed design delivers improved hole quality and fragmentation resulting in increased productivity, reduced maintenance and lower cost of operation.

KEY FEATURES

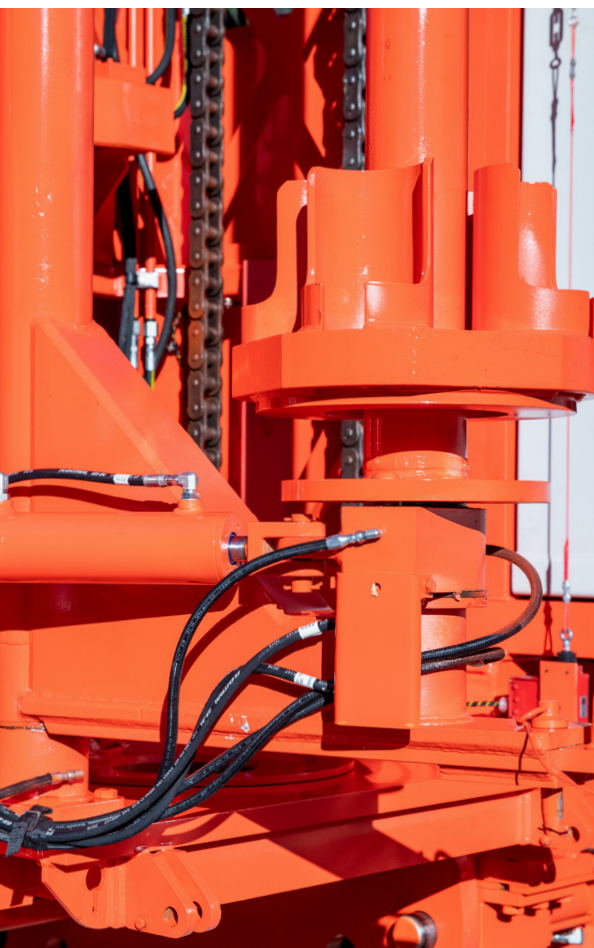
FEATURE	BENEFIT
Chain Feed System and Timing Shaft	Improves hole and blast quality increases productivity and lowers maintenance costs
Angle Drill 0-30° at 5° increments	Improves fragmentation and wall control
Rigid Lattice Design	Reduces maintenance and operational costs
Two-Speed Rotary Head	Tool-less adjustment of torque/speed requirements to meet the application





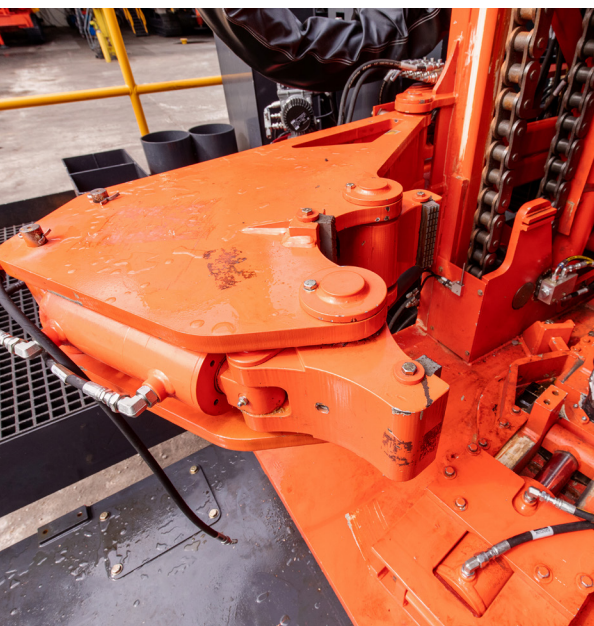
PIPE AND TOOL HANDLING

Pipe and tool handling features allow optimization of drill string configuration to your application increasing drilling efficiency and reducing cost.



KEY FEATURES

FEATURE	BENEFIT
Pipe Loaders	Reduced maintenance and operational costs
Full Depth Capability for All Pipe Sizes	Optimized drill string configuration for the application increasing drilling efficiency and reducing cost



OPERATOR ASSIST FEATURES

Operator assist features improve efficiency and downstream throughput, delivering a reliable high yielding production environment.

KEY FEATURES

FEATURE	BENEFIT
Auto Level	Precision leveling improves productivity and reduces structural stress
Wireless Remote Tram	Improves safety, reduces costs and machine damage
Electronic Depth Counter	Consistent depth accuracy improves blast quality and fragmentation





ADVANCED FEATURES

Advanced features work together to optimize operator performance, reduce cost and maximize productivity.

KEY FEATURES

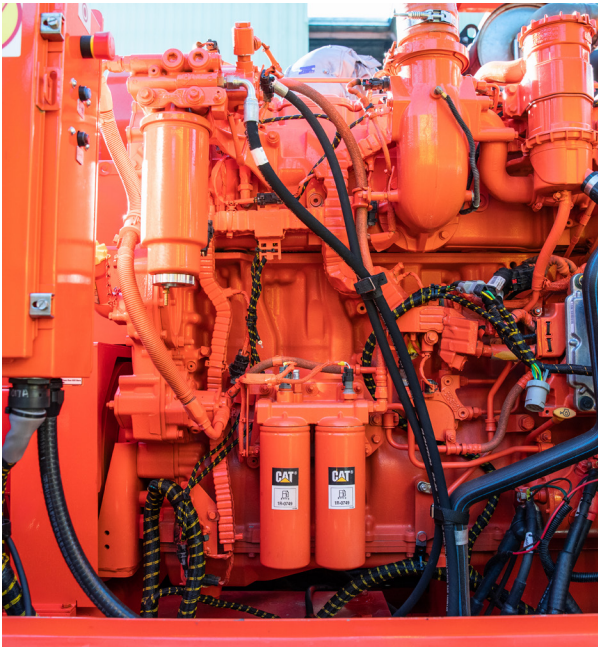
FEATURE	BENEFIT
Health Monitoring System	Operator monitors machine health in real time to help maximize uptime/ productivity
Mobile Grade Rugged Touch Screen	7" Touch screen provides a central information point for drill operation and feedback improving operator connectivity
Enhanced Control System	Improved productivity, shorter learning curve
Advanced Compressor Control	Reduced environmental footprint, reduced fueling events, reduced system load all lead to lower operating costs

MAINTENANCE

Maintenance friendly design reduces the time needed for scheduled and unscheduled tasks, minimizing maintenance personnel contact with the drill, lowering maintenance costs and improving TCO.

KEY FEATURES

FEATURE	BENEFIT
Centralized Fluid Service Center	Reduces time for fluid fills, improving utilization and reducing the chance for fluid spills and negative environmental impact
Oil Sampling Points	Safer, cleaner sample with reduced risk of contamination for engine, compressor, and hydraulic system
Service Decks Designed for Easy Maintenance	Provides easy access to frequent maintenance areas, speeding maintenance routines and reducing chance for injury





ERGONOMICS AND SAFETY

Key safety features are in place to help protect mine site personnel from injury. Ergonomic features enhance the operators interface with the machine leading to improved productivity.

KEY FEATURES

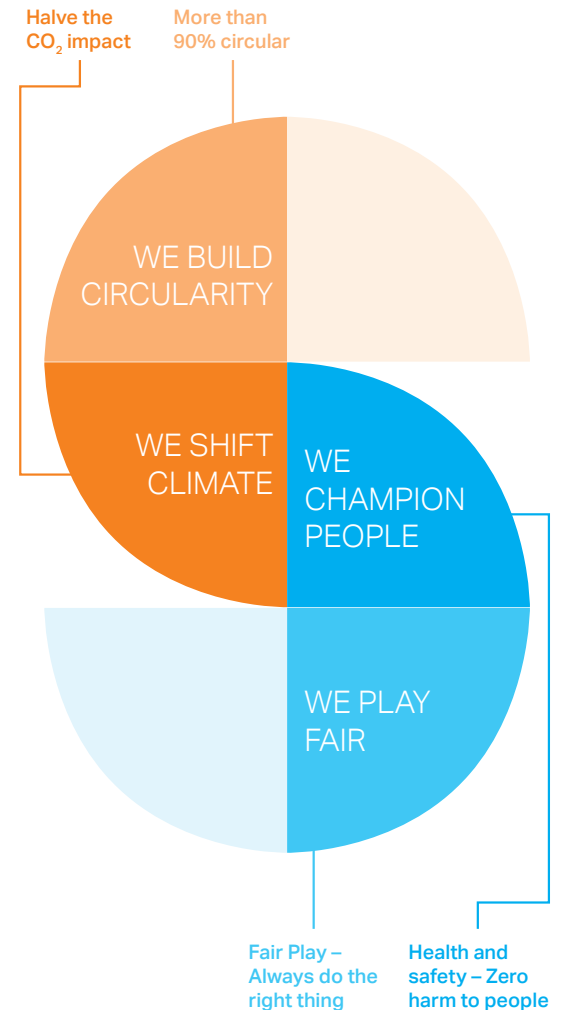
FEATURE	BENEFIT
Armrest Mounted Controls	Reduced operator fatigue improves productivity and accuracy
Large Ergonomic Cabin	Allows a trainer to comfortably observe operator, reduces operator fatigue and improves productivity
Touch Screen and Digital Gauges	Instant, centralized access to critical information on machine performance and health, improving operator efficiency
Camera System	Improved field of vision for added safety during tramming and drilling operations
Swivel Enabled Operators Seat and Large Operators Window	Provide optimal viewing of drill string and work deck
Protective Features Throughout	Minimizes operator error reduced equipment damage, improved safety through the use of interlocks

SUSTAINABILITY

Advanced compressor control system reduces carbon emissions, extends component life leading to improved total operating costs while centralized service center with quick connect fittings prevent fluid spills and leaks during refill operations.

KEY FEATURES

FEATURE	BENEFIT
Advanced Compressor Control System	Reduces fuel consumption, cost of operation and emissions
Large Ergonomic Cabin	Allows personnel to comfortably operate the drill in even while wearing cold weather or arctic attire.
Centralized Fluid Service Center	Reduces the chance of fluid spills and associated negative environmental impact



THE D245X

The D245X combines all the dependability and power of the D245S but features an intelligently redesigned operator's cab for maximum ergonomic comfort.

The D245X comes standard as a rotary drill, with a low pressure compressor and stronger hydraulics for pulldown. Its most popular application is coal mining. The D245X is a reliable and productive machine to rotary drill in aggregate or ore.

Specifications

- 127 to 203 mm (5" to 8") diameter holes
- Maximum hole depth of 27m (88' 10")
- Pulldown 184 kN (41,500 lbf)



MACHINE SPECIFICATIONS

D245X

	METRIC	IMPERIAL
Hole diameter	127-203 mm	5" - 8"
Maximum hole depth	27 m	88' 10"
First pass hole depth	8.8 m	28' 10"
FEED		
Maximum pulldown	184 kN	41,500 lbf
Weight on bit	209 kN	47,000 lbf
Hoist rate	0-35.7 m/min	0-117 fpm
ROTARY HEAD (2 SPEED)		
0-115 rpm	Torque 8567 Nm	6319 ft-lbs.
0-185 rpm	Torque 5381 Nm	3969 ft-lbs.
POWERGROUP		
Tier 4 / Stage V		
Caterpillar C15	403 kW (540HP) @ 1800rpm	
Compressor	29.7 m ³ /min @ 6.9 bar	1050 cfm @ 100 psi
Non-Tier 4		
Caterpillar C15	354 kW (475HP) @ 1800rpm	
Compressor	29.7 m ³ /min @ 6.9 bar	1050 cfm @ 100 psi

THE D25KX

The D25KX is equipped as a down the hole (DTH) hammer drill, and shares the same features as the D245X with the addition of a high pressure air compressor. It is commonly used in large quarries and in gold and other metals mines and is the drill of choice among contractors.

Specifications

- 127 to 203 mmw (5" to 8") diameter holes
- Maximum hole depth of 27m (88' 10")
- Pulldown 184 kN (41,500 lbf)
- Advanced compressor control



MACHINE SPECIFICATIONS

D25KX

	METRIC	IMPERIAL
Hole diameter	127-203 mm	Up to 8"
Maximum hole depth	27 m	88' 10"
First pass hole depth	8.8 m	28' 10"
FEED		
Maximum pulldown	184 kN	41,500 lbf
Weight on bit	209 kN	47,000 lbf
Hoist rate	0-35.7 m/min	0-117 fpm
ROTARY HEAD (2 SPEED)		
0-120 rpm	Torque 8567 Nm	6319 ft-lbs.
0-185 rpm	Torque 5381 Nm	3969 ft-lbs.
POWERGROUP		
Tier 4 / Stage V		
Caterpillar C15	403 kW (540HP) @ 1800 rpm	
Compressor	28.3 m ³ /min @ 24.1 bar	1000 cfm @ 350 psi
Non-Tier 4		
Caterpillar C18	470 kW (630HP) @ 1800rpm	
Compressor	32.8 m ³ /min @ 24.1 bar	1160 cfm @ 350 psi

THE D75KX

The D75KX combines all the dependability and power of the D75KS but features an intelligently redesigned operator's cab for maximum ergonomic comfort.

The D75KX comes with low pressure air for rotary drilling. Optional high pressure compressors add flexibility to drill with 8" hammers. It is a rugged and time-proven design often found in stripping applications in coal or metals mining.

Specifications

- 229 to 279 mm (9" to 11") diameter holes
- Maximum hole depth 52.5 m (174'4")
- Pulldown 334 kN (75,000 lbf)



MACHINE SPECIFICATIONS

D75KX

	METRIC	IMPERIAL
Hole diameter	229-279 mm	9"-11"
Maximum hole depth	52.5 m	174' 4"
First pass hole depth	10.2 m	33' 6"
FEED		
Maximum pulldown	334 kN	75,000 lbf
Weight on bit	409 kN	92,000 lbf
Hoist rate	0-27 m/min	0-89 fpm
ROTARY HEAD (2 SPEED)		
0-93 rpm	Torque 13292 Nm	9804 ft-lbs.
0-144 rpm	Torque 8635 Nm	6369 ft-lbs.
POWERGROUP		
Tier 4 / Stage V / Non-Tier 4		
Caterpillar C27	662 kW (875HP) @ 1800 rpm	
Compressor Low Pressure	56.6 m ³ /min @ 6.9 bar	2000 cfm @ 100 psi
Compressor High Pressure	41.0 m ³ /min @ 24.1 bar	1450 cfm @ 350 psi

PARTS AND SERVICES

Sandvik Mining and Rock Solutions Parts and Services division is committed to your productivity and ready to act 24 hours a day, 365 days a year to keep your Sandvik equipment running.

Around-the-clock service, qualified engineers and genuine components and parts on demand come together to minimize your unplanned downtime. My Sandvik customer portal and customer support center delivers you 24/7 support, no matter where you are. You can access your fleet information, request quotations, place orders and much more, any time.

SANDVIK ROCK TOOLS

When using a selection of rock tools, you need to know that they are reliable. Sandvik is experienced in both using and supplying high quality rock tools, and offer an extensive range to cover all of your needs and requirements.



SANDVIK DTH DRILLING TOOLS

For efficient down-the-hole (DTH) drilling, Sandvik offers high performance drilling tools to increase your productivity and reduce your total operation cost.

SANDVIK ROTARY DRILLING TOOLS

Sandvik offers a wide range of rotary drilling tools needed to support our customers entire process, offering a complete drill string for rotary applications, Sandvik has the product to meet your specific demands.

ROCK TOOLS SERVICES

In addition to supplying your operation with the premium brand of rock tools, our range of added services and digital solutions support your drilling operations, everyday – all year round. And we can also take full responsibility for the supply and life cycle management of your tools with our Rock Tools Contract Services.

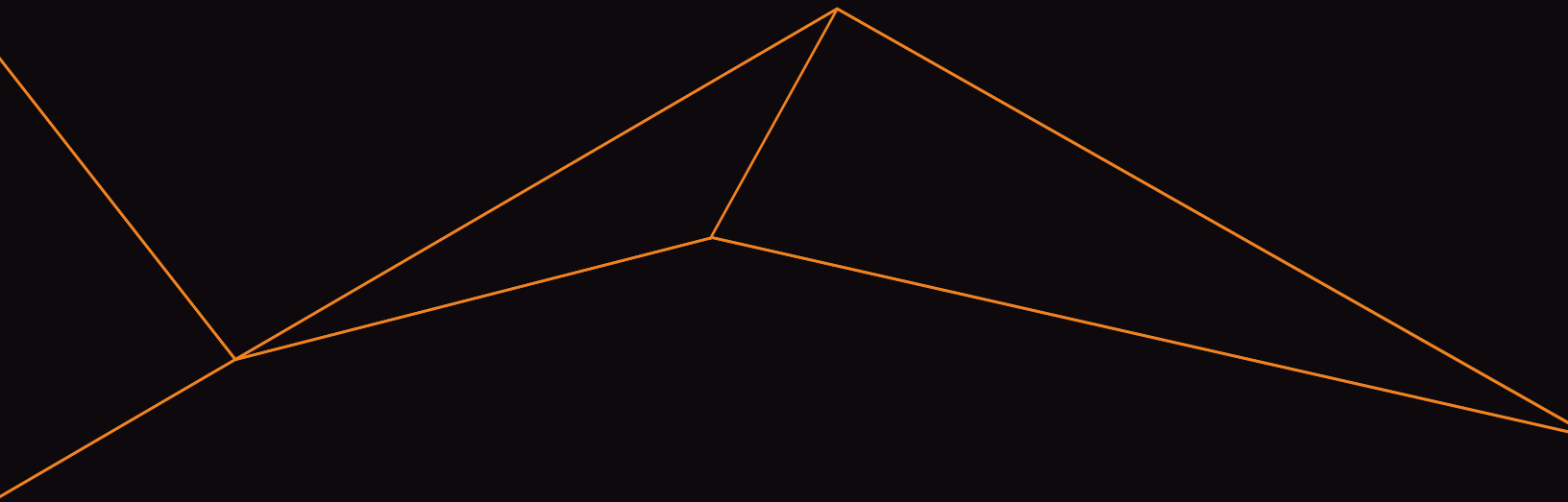
CARBIDE RECYCLING

The global shortage of raw materials inspired the Sandvik scrap recycling program, an initiative that addresses today's increasing environmental concerns while also benefiting customers' bottom line.

Find out more at

<https://home.sandvik/en/products-services/>





##-###ENG © SANDVIK AB 2020. SANDVIK IS A TRADEMARK
OWNED BY THE SANDVIK GROUP OF COMPANIES.

