

# The Broken Phone Game

Uh, recession.  
Good time to  
BUY!

OK. BUY!

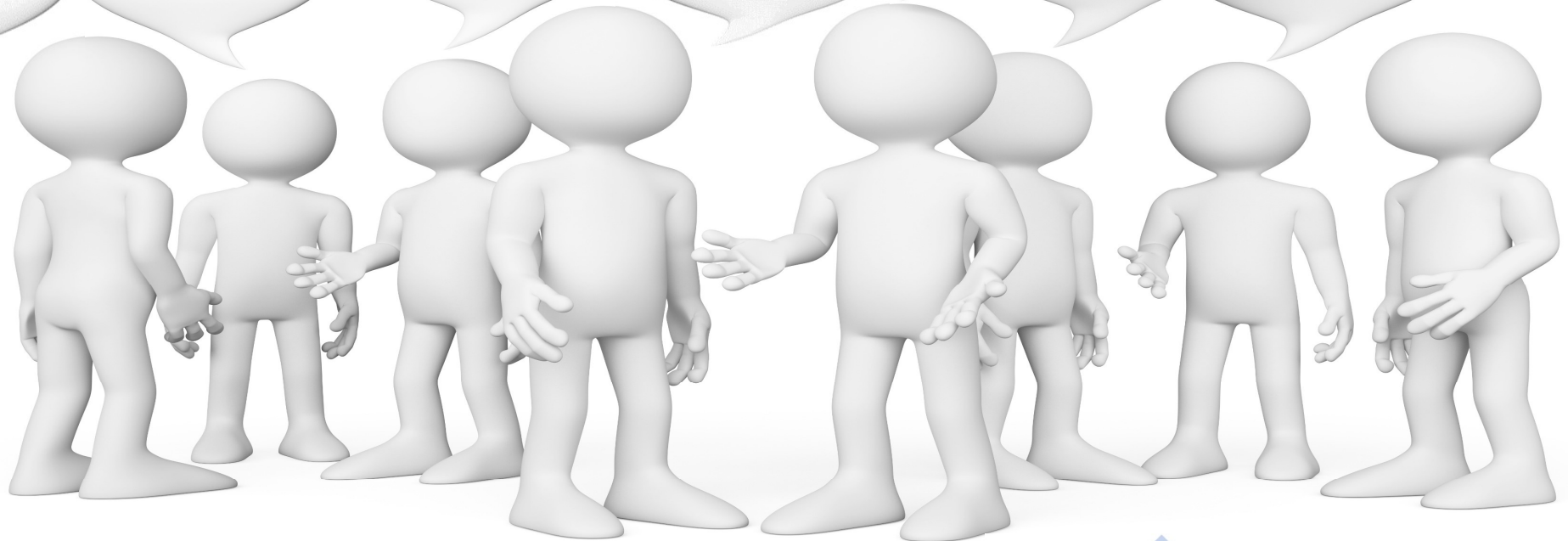
Bye. Are you  
leaving?

Leaving? Did  
she get fired?

Oh no, layoffs?!  
This is so  
depressing!

DEPRESSION!!!

We are in a  
depression.  
SELL!



# The Power of Data



Dundee Precious Metals



**2022** / Tampere

**Nikolay Kirov**  
Superintendent Operational Design  
Information material

# Agenda

1-4

Who We Are

5-10

OEE and Other Fact-based Analyses

11

Our Lessons Learnt



# 1. Who we are?



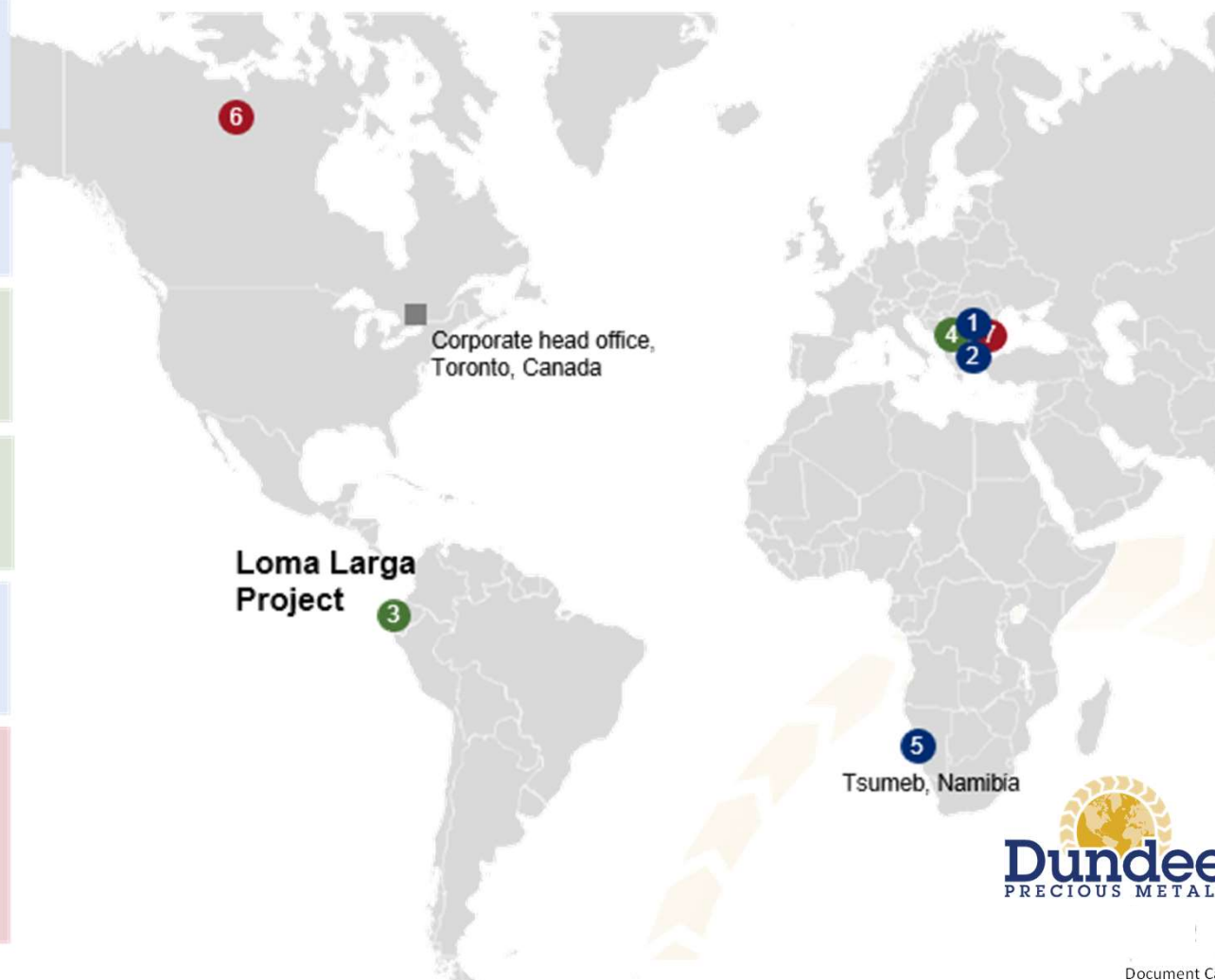
A Canadian based, international gold mining company engaged in the acquisition, exploration, development, mining and processing of precious metals.



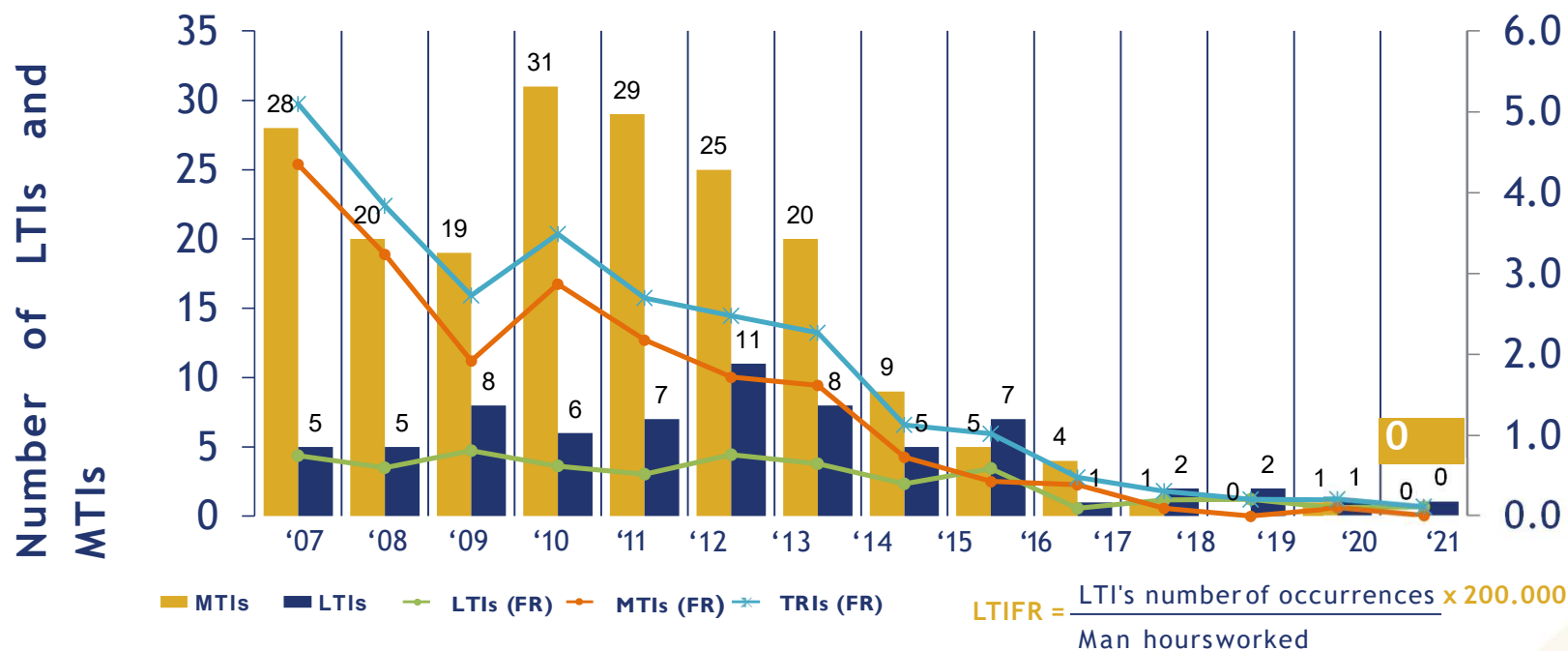


## 2. Our Global Portfolio

1	<b>Chelopech (100%)</b>	
	<b>Location</b> Chelopech, Bulgaria	<b>Stage</b> Producing
2	<b>Ada Tepe (100%)</b>	
	<b>Location</b> Southern Bulgaria	<b>Stage</b> Producing
3	<b>Loma Larga (100%)</b>	
	<b>Location</b> Southern Ecuador	<b>Stage</b> Permitting
4	<b>Timok (100%)</b>	
	<b>Location</b> Serbia	<b>Stage</b> Feasibility study
5	<b>Tsumeb (92%)</b>	
	<b>Location</b> Tsumeb, Namibia	<b>Operation</b> Specialty smelter
<b>Strategic Investment Portfolio</b>		
6	<b>Sabina Gold &amp; Silver</b>	<b>Location</b> Nunavut, Canada
7	<b>Velocity Minerals</b>	<b>Location</b> Southern Bulgaria



### 3. Health and Safety Chelopech



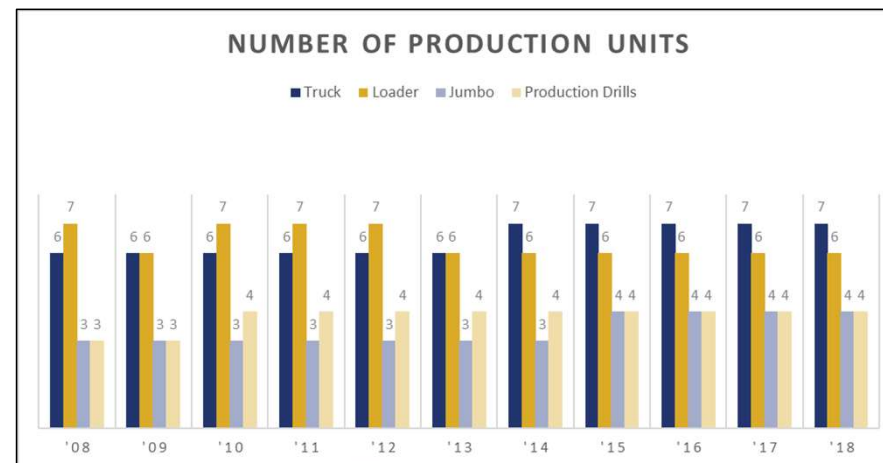
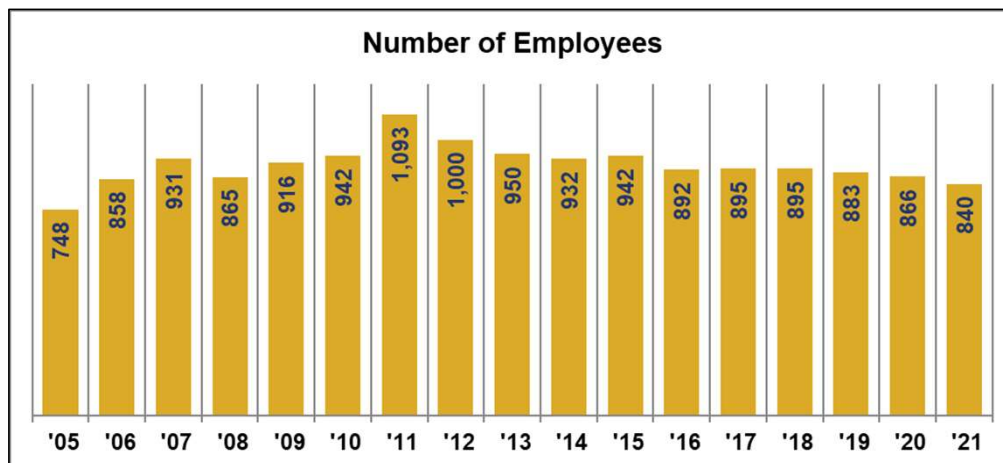
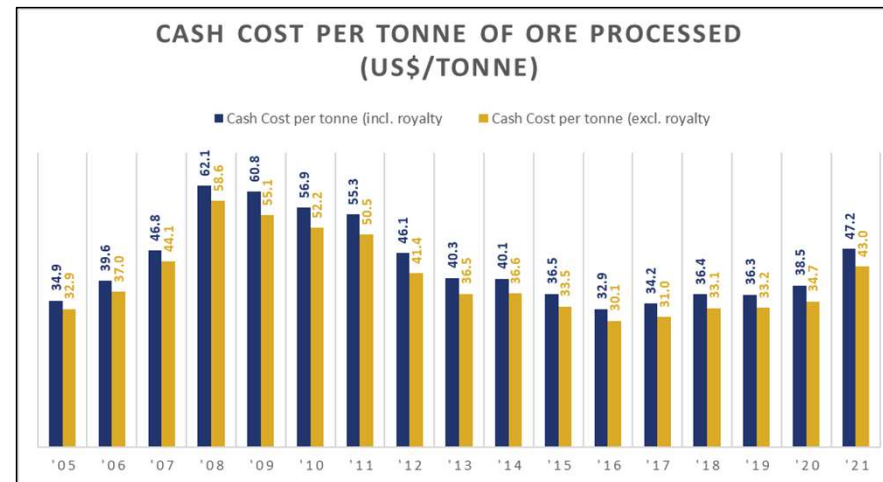
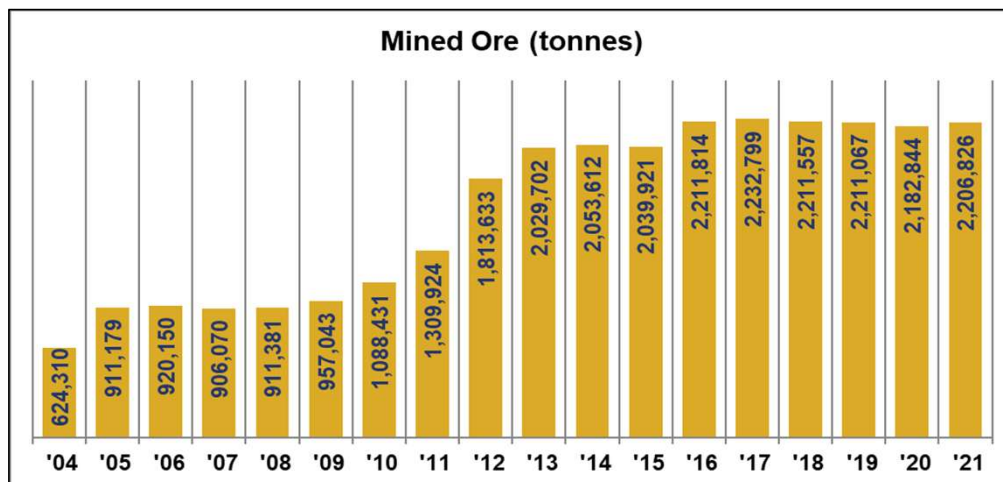
Employees

'11	'12	'13	'14	'15	'16	'17	'18	'19	'20	'21
1060	1021	972	964	968	954	927	911	909	877	833

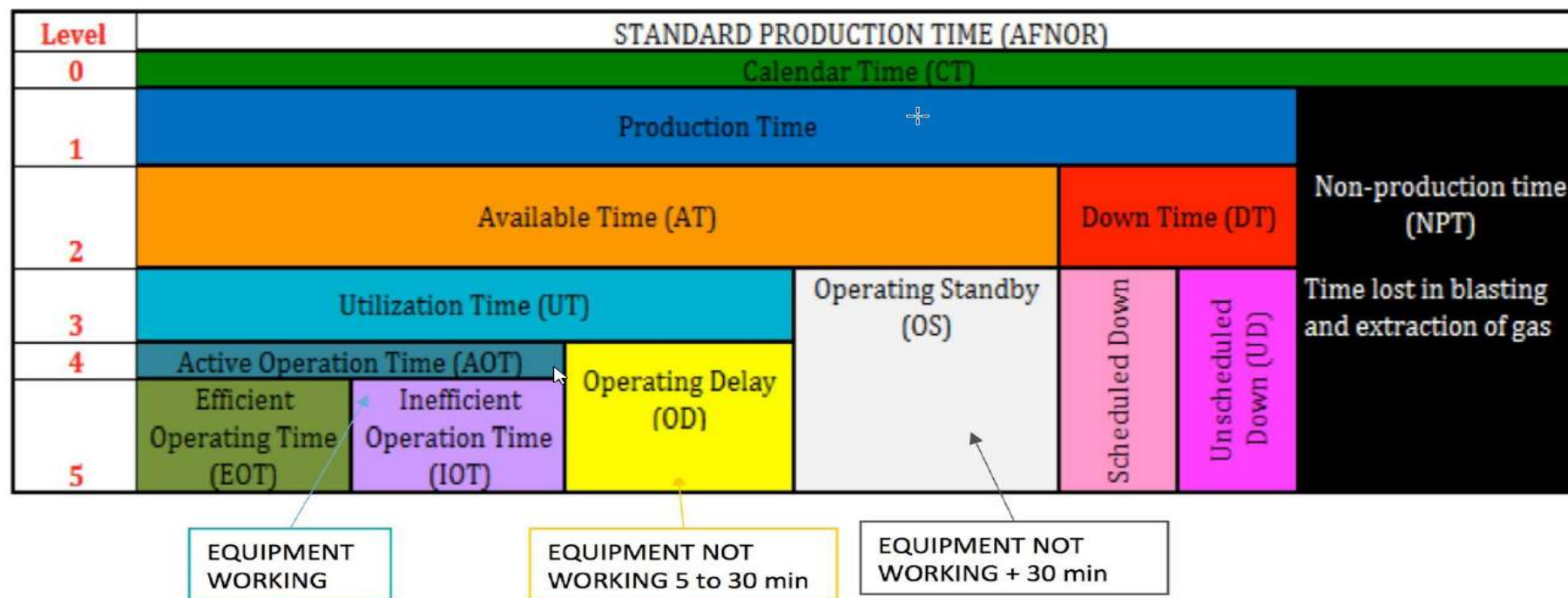


# 4. Chelopech Mine

## KEY RESULTS & TRENDS



## 5. Reminder - What is OEE\*

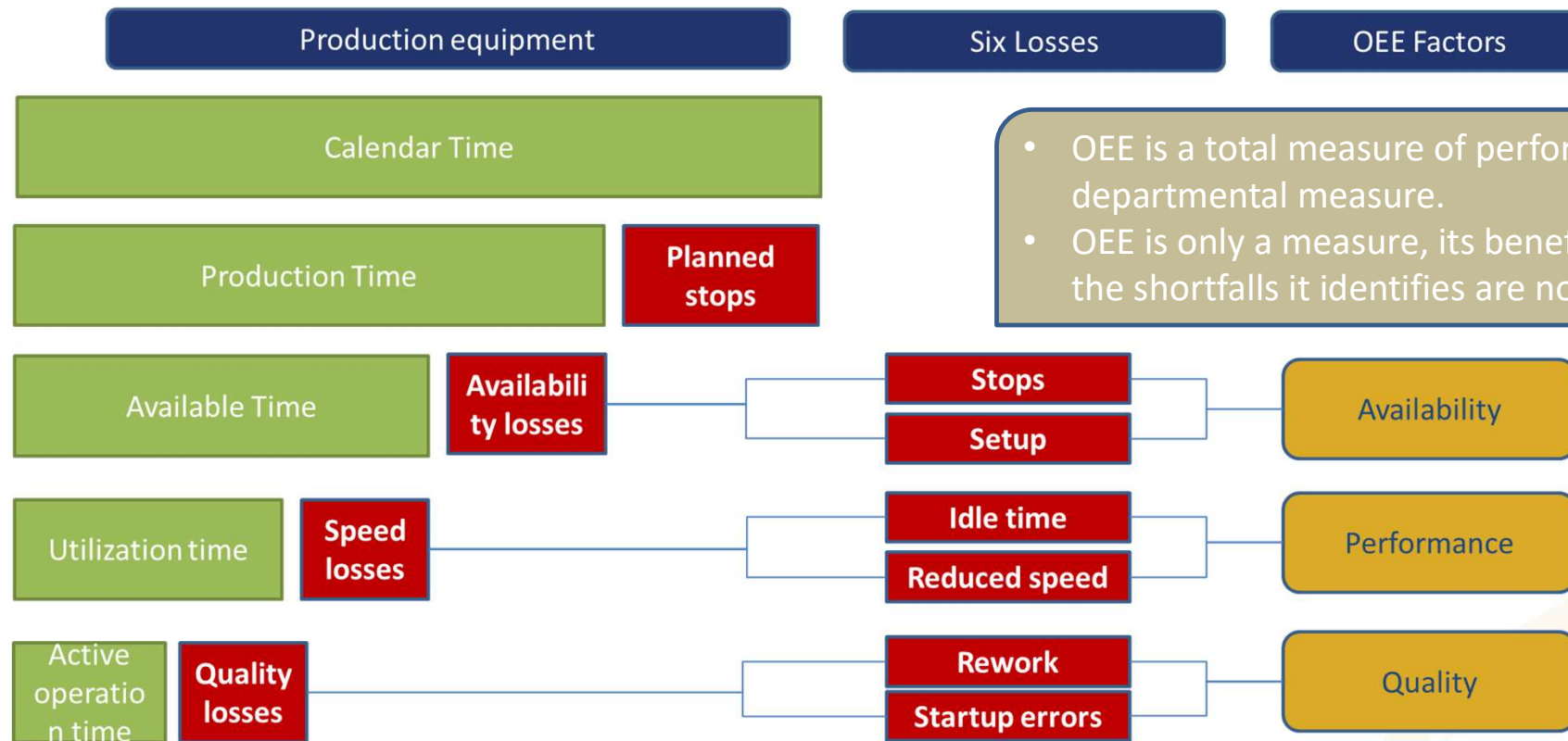


Source: Reactor

\* Overall Equipment Effectiveness (OEE) = Availability (Available time/Production time) \*  
 Performance (Utilization time/Available time) \* Quality (Efficient operating time/Active  
 operating time)



## 6. Reminder - Why OEE



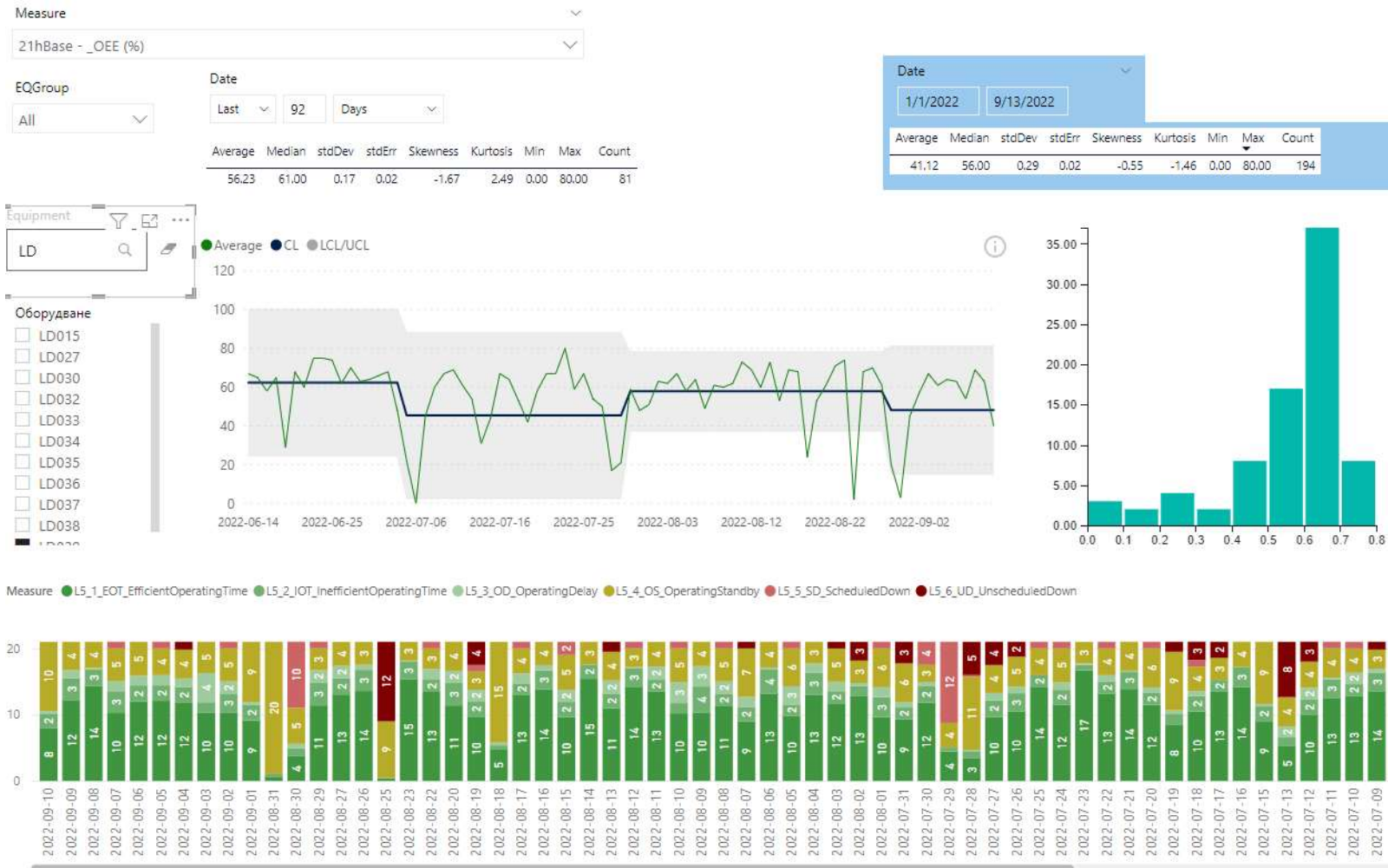
- OEE is a total measure of performance not a departmental measure.
- OEE is only a measure, its benefits will be lost if the shortfalls it identifies are not acted upon.

\* Overall Equipment Effectiveness (OEE) = Availability (Available time/Production time) \* Performance (Utilization time/Available time) \* Quality (Efficient operating time/Active operating time)



# 7. OEE at DPM Chelopech

2021, April 15, OEE Implemented based on Sandvik's equipment telemetry data



## 8. BEV at DPM Chelopech

### *Building the knowledge for the future!*

- Potential BEV productivity improvement of ~16% as a result of shorter cycle times
- BEV equipment (loader & truck) results in 66% CO2 lower emissions over lifetime compared to their diesel counterparts

### *Items not yet quantified:*

- Expected ventilation savings resulting from lower heat and exhaust emissions from BEV
- Expected full scope telemetry data readily available
- Expected lower maintenance labour hours on BEV

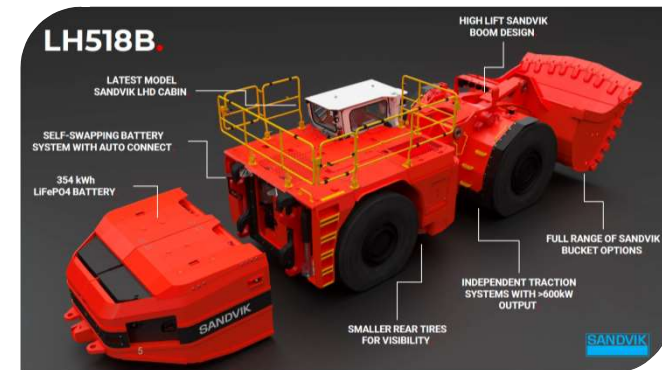
Sources:

Link to TH550B Sandvik Video: <https://www.youtube.com/watch?v=NghbDA08nVw>

Link to TH550B battery swap: <https://www.youtube.com/watch?v=ZxCP4N2H6ag>

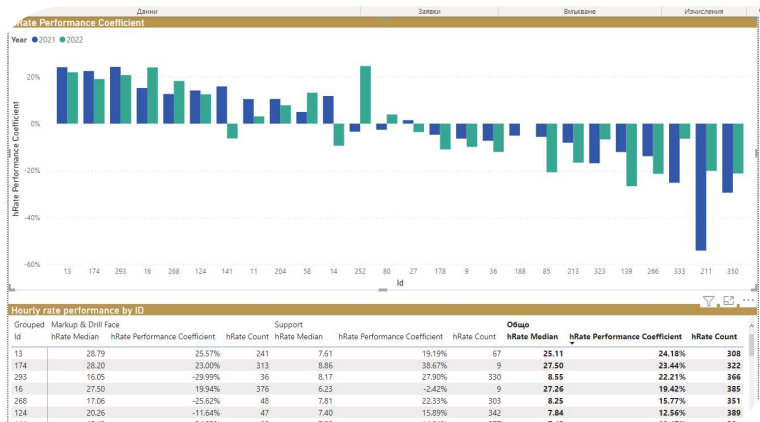
Link to LH518B Sandvik Video: <https://www.youtube.com/watch?v=7jHrM3jEvJo>

Supporting studies & documentation:



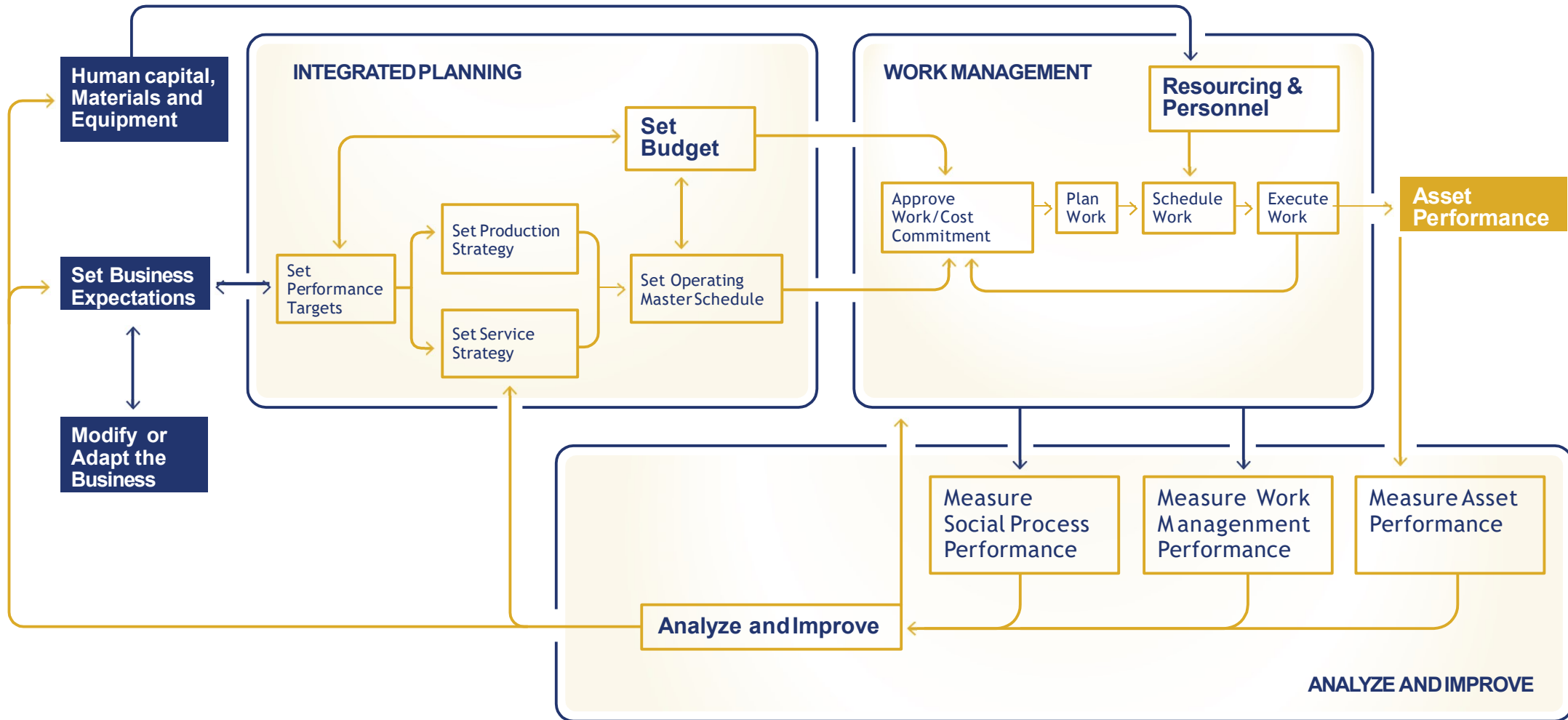
## 9. Other Fact-based Analyses

Diamond Drill Act (m) and Diamond Drill Plan (m) by Date

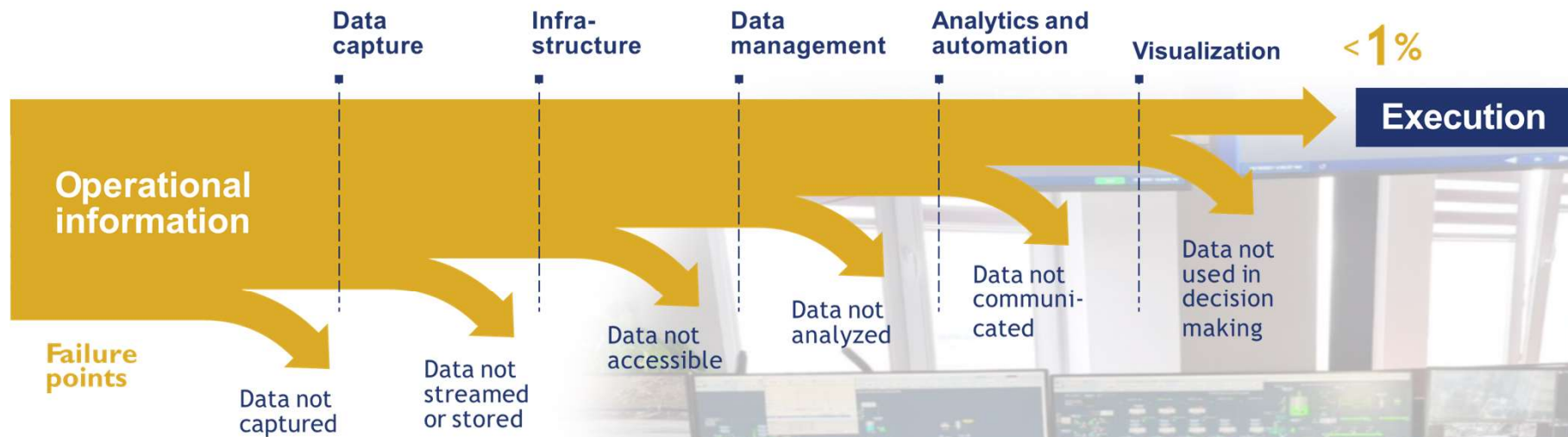




# 10. The Operations Management Model



# 11. Lessons Learnt



Source: McKinsey & Company



Thank you for  
your attention!

